



Inside Lakeside country guest house

Lakeside
COUNTRY GUEST HOUSE

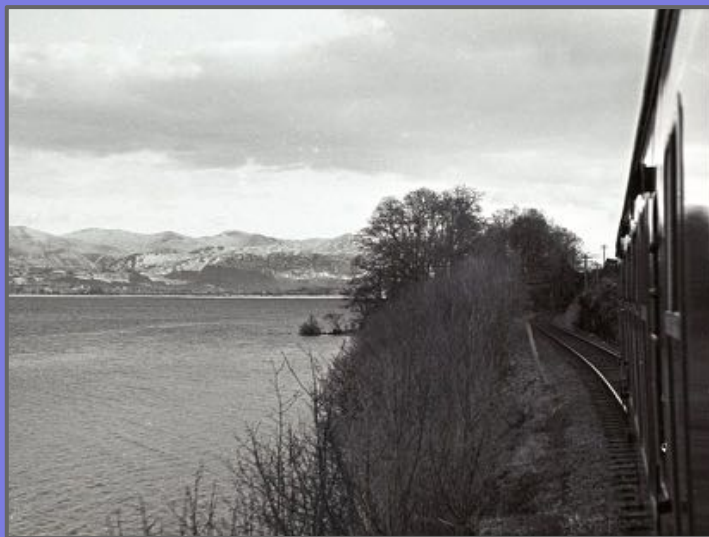
A warm welcome to you!

About the house

Lakeside was built around 1894 and the house has many of the period Arts and Crafts features still remaining. The views of Ullock Pike and Skiddaw are simply stunning, especially from the bedrooms on the first floor, where you can also see Bassenthwaite Lake. We have 4 letting rooms, all with their own bathroom and we have a tranquill dining room where you can enjoy an extremely tasty breakfast. We feel very privileged to live here. Sharing our home with guests who want to experience this lovely part of the world is a dream come true!

**A little
piece of
history**

Lakeside country guest house was originally built for the gentleman who managed the penrith to cockermouth railway. It was the first house to have been built in dubwath on the road opposite the lake. How lovely it must have been back in 1900.



Bassenthwaite lake station

The history of a railway

The Penrith to Cockermouth railway operated between 1864 and 1972.

Local stories

When they were children, the owners of the farm where we get our eggs remember the train drivers throwing Christmas presents from the engine car into the farmyard!

The future of the railway

The current owners of the old station are turning it into a restaurant. So watch this space!



There was lots of excitement in dubwath when the locomotive from the film set of the orient express arrived!



A unique house

Home from home



The hallway

There is an original oak floor and bannister, leading up to a stunning stained glass window. It looks great at Christmas time.

Flowers

The house is always full of lovely blooms and we have been working hard on the hanging baskets too!

Relaxing atmosphere

It is really important that all our guests feel relaxed while staying with us. After all, holidays are precious!



Period projects

Lakeside
COUNTRY GUEST HOUSE

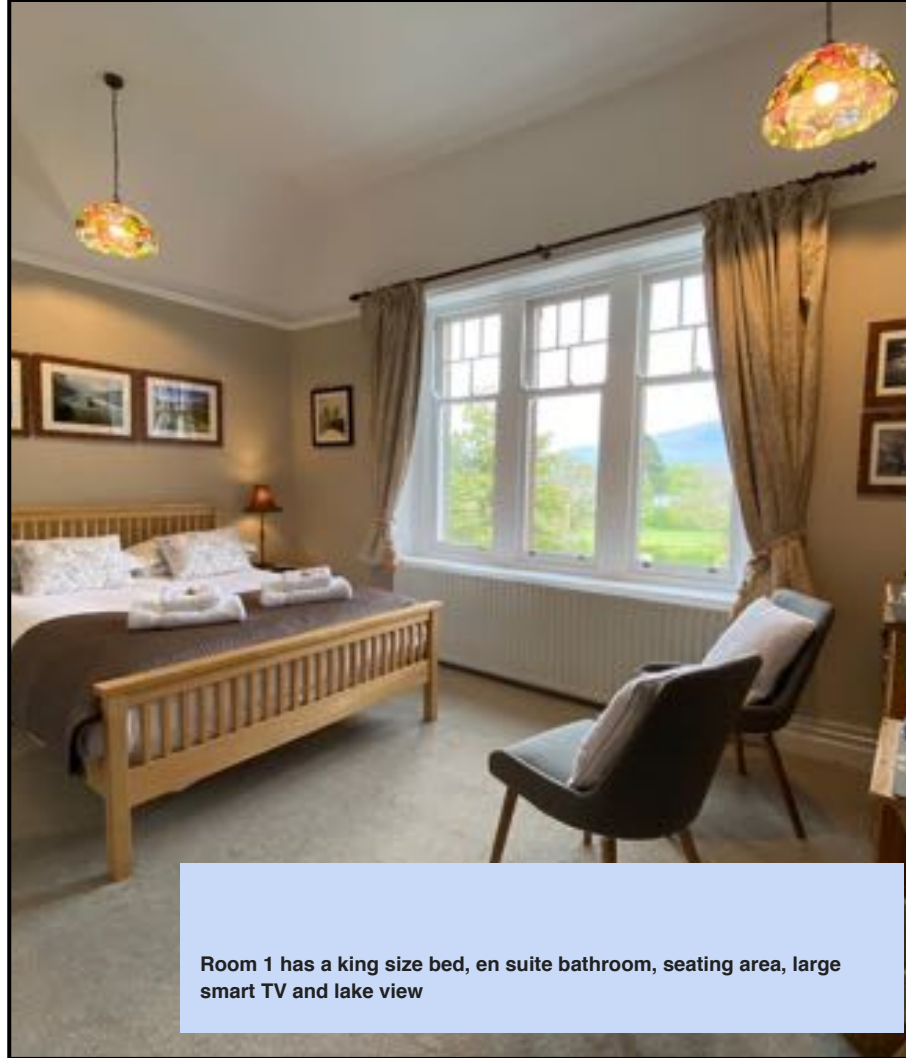
Arts and Crafts

Karen did a bit of research about the Arts and Crafts movement. The textile designer, William Morris, was popular at the turn of the century. So, she covered the chairs in one of his gorgeous fabrics - Theodosia.

Art Deco

The house has numerous Tiffany lampshades and ceiling lights which gain many admiring glances from our guests.

Guest rooms



Room 1 has a king size bed, en suite bathroom, seating area, large smart TV and lake view

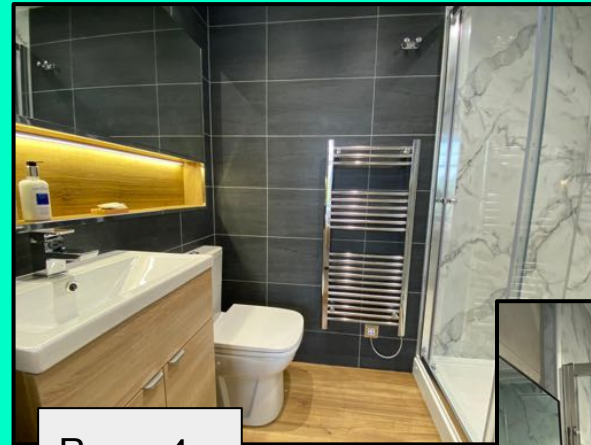


Room 4 has a super king bed which can be 2 singles, en suite bathroom, seating area, large smart tv and lake view

New bathrooms

We have been busy installing new en suite bathrooms in our superior rooms, complete with large shower enclosures, choice of shower head, lit mirror, soft close sink unit and heated towel rail. We hope they have added a little touch of luxury to our rooms with a view.

Lakeside
COUNTRY GUEST HOUSE

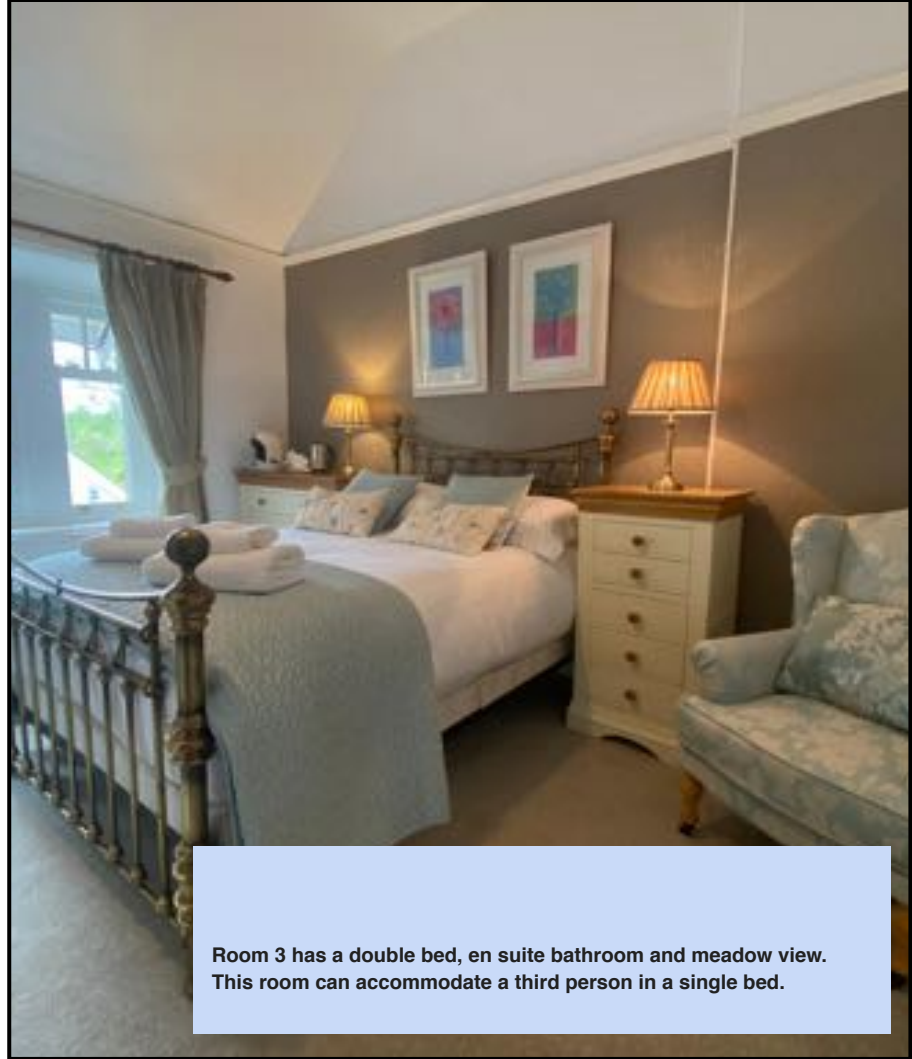


Room 4

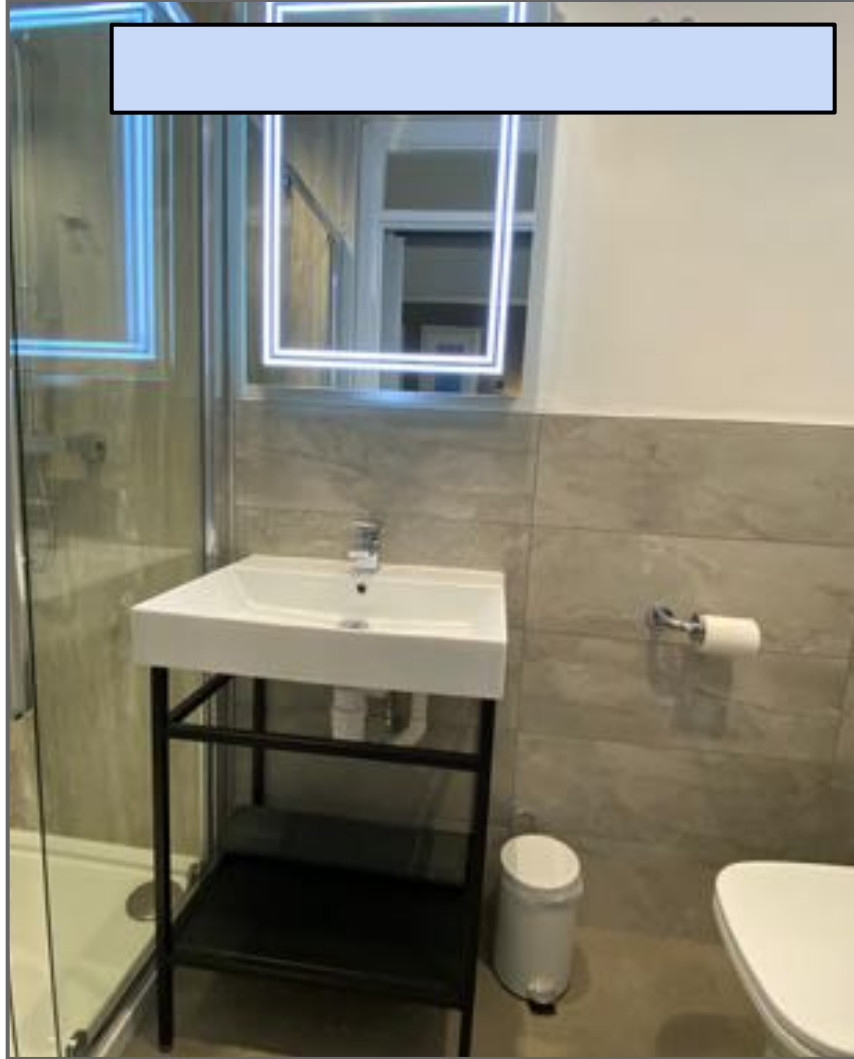


Room 1





Room 3 has a double bed, en suite bathroom and meadow view. This room can accommodate a third person in a single bed.



Cosy room 5

Recently redesigned

A small double room with a view of the lake and mountains.

Large bathroom

Although this is not an en suite room, your private bathroom is located two steps across the hall.

Price promise

This room will always be cheaper than the rest but you will still enjoy all the other little treats.



breakfast



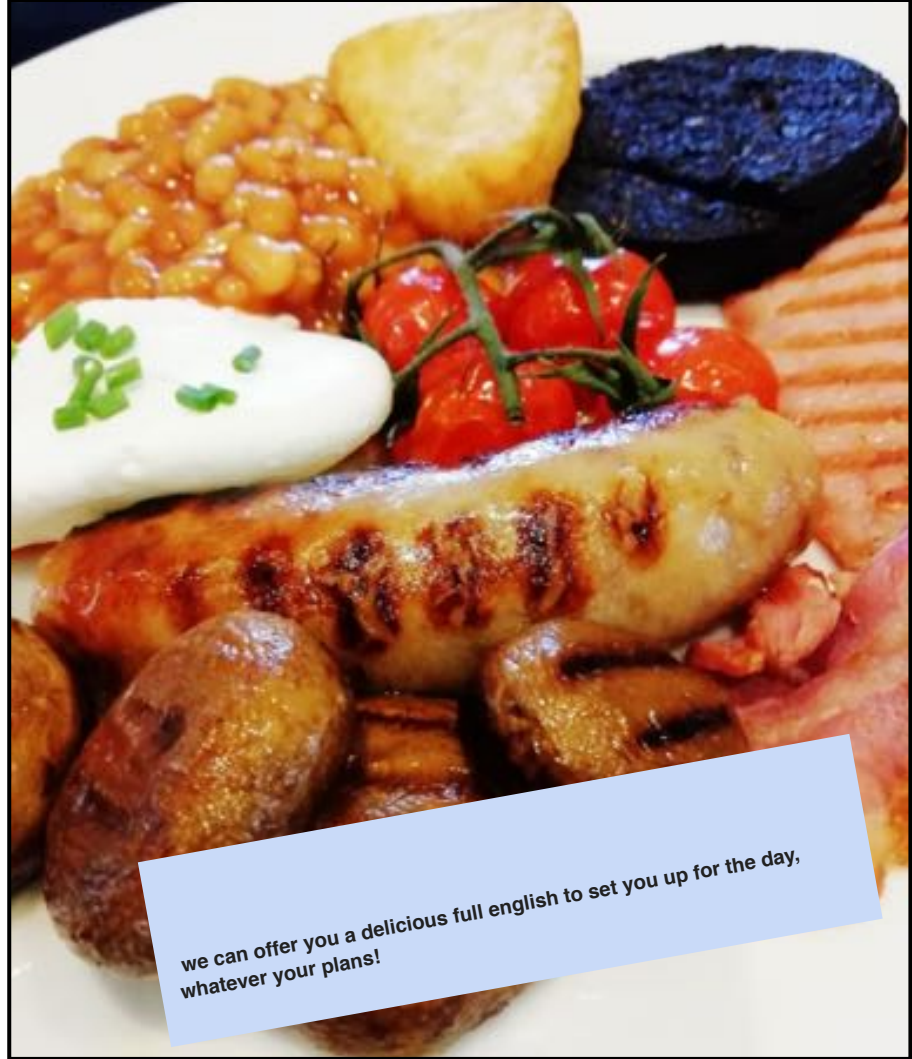
Our lakeside breakfasts

Local produce

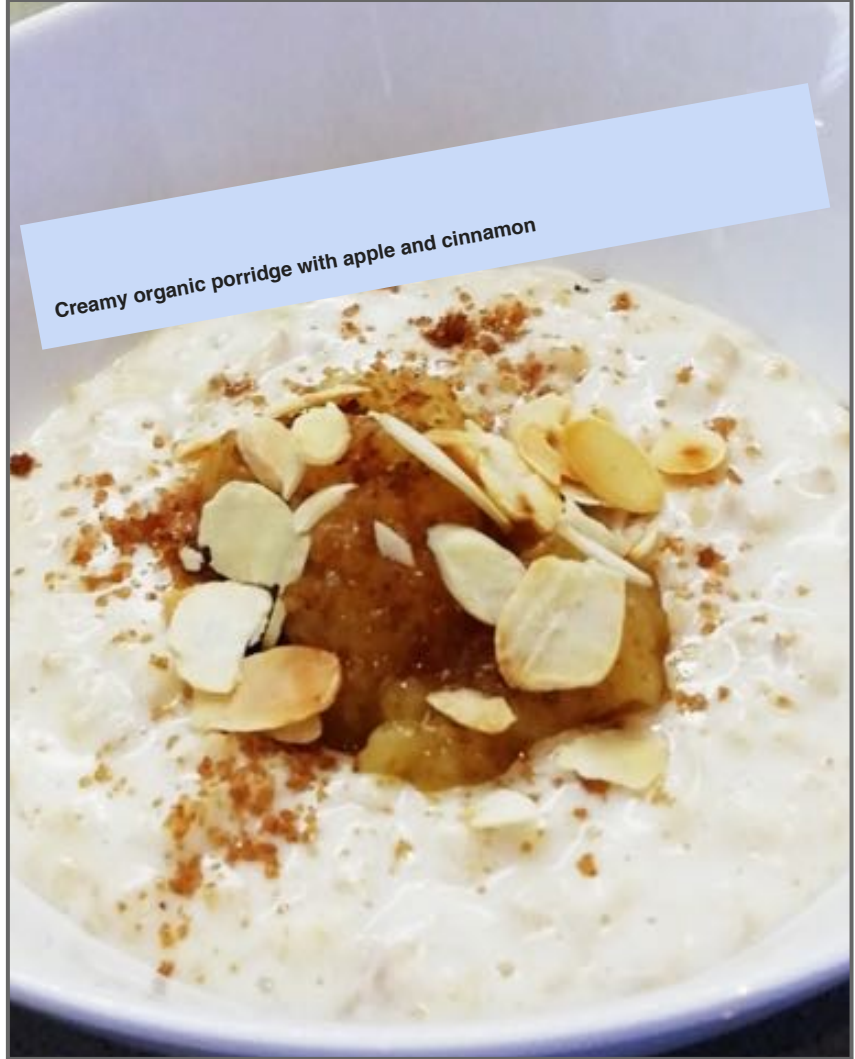
Eggs from Scales Farm in Embleton, sausage and bacon from the local butcher's, bread from the local bakery and jam made at Portinscale. We try our best to keep it local!

Our promise

We have high standards and continually endeavour to produce the best breakfasts we can. Your feedback and suggestions are always appreciated. We also do our best to cater for all diets.



we can offer you a delicious full english to set you up for the day,
whatever your plans!



Creamy organic porridge with apple and cinnamon

Order your breakfast on line

Once you have checked in, we will send you an email with our breakfast menu.

All you have to do is fill it in, using your phone or device, and return it by 8pm the night before. We will do the rest.

Breakfast menu Lakeside Country Guest House

Please place your order before 8 pm the night before. Each guest needs to submit their own form.

Please tell us which room you are in. Where it says "Other", please type your name so we can label your breakfast. *

- Room 1
- Room 3
- Room 4
- Room 5
- Other...

What time would you like to eat? *

- 8.15
- 8.30

Check-in routine

- Check in is 4pm - 7pm
- It helps if you can let us know your ETA
- Check-in can be done in the hallway quite comfortably
- The room key will be in the door to your room
- Cup of tea/coffee on arrival
- Leaflet packs are available



**Guest
safety
matters to
us**



We have been busy getting ready for reopening



- We are asking you for an ETA so we can open the door and check you in. Check-in is 4pm - 7pm.
- Every part of your room has been cleaned in line with [government guidelines](#)
- There is hand sanitiser in our public areas and we are registered for the Track and Trace system.
- We have leaflet packs for you to keep and there is a handy QR code in your room which you can scan for information on things to do locally.
- Fresh, wrapped loo rolls are in your bathroom along with toiletries.
- We will send you a breakfast pre-order menu via email. The dining room has seating 1m apart but there is the option to eat on the terrace (weather permitting). Breakfast is from 8.15 - 9am.
- Laminated local walks can be found in the drawers.
- A hair dryer can be found in the drawers in your room. We have extra blankets, fans and an ironing board if you need them.
- We are contactable 24/7 during your stay (details at the end of the book).

**On your
doorstep**

Silver meadows



Little nature reserve on our doorstep

Cross the A66

Go through the gate on your right. Follow the path left round the meadow.

Bird life

Reed warblers, sedge warblers, reed buntings, chiffchaffs, linnets and nuthatches to name but a few.

Be aware

- Dogs must be on a lead
- Heavy rain can flood the meadow

A scenic view of Bassenthwaite Lake, a large natural lake in the Lake District, England. The water is calm and reflects the sky and surrounding green hills. In the distance, a person is standing on a blue stand-up paddleboard (SUP), holding a paddle. In the immediate foreground, the tip of a red paddle is visible, suggesting the viewer is on another SUP. The sky is blue with scattered white clouds.

Bassenthwaite lake

To get to the lake, turn left out of the guest house, walking carefully along the road, past the sailing club. Just after the club, there are several gaps in the hedge to get to the path along the lake shore. it is quite rough underfoot but follow the path all the way to ouse bridge where the river derwent joins the lake.



Closest Best restaurants

A close-up photograph of a white ceramic cup filled with a rich, dark chocolate pudding. The pudding is topped with a dollop of white whipped cream, a delicate chocolate lattice garnish, and a single orange and yellow flower. The cup sits on a light-colored wooden table. In the background, a white napkin and a silver fork are visible.

**Wheatsheaf (at
embleton) 017687 76416
(closed Mon/tues)**

**Lakes Distillery
(closes at 6pm)
017687 88850**

A favourite pudding of mine at the wheatsheaf

Closest pub for a nice pint

The pheasant - 5 mins walk

There is also a restaurant but, again, you would be wise to book. If you walk over there at night, you are best to take one of our torches because we have no street lights!

The garden is lovely for a drink on a summer's day.



Lakeside

Tim 07881 863 171

Karen 07496 679 794

Call 017687 76358 for our best rates

Email: info@lakesidebassenthwaite.co.uk